



100 Broadway

Between Pine Street and Wall Street

Core FiDi Storefront Opportunity

Space

Ground Floor	5,753 sf
Lower Level	1,880 sf
Mezzanine	1,920 sf
<u>Second Floor</u>	<u>10,547 sf</u>
Total	20,100 SF

Frontage

Approximately 60 feet

Term

Through 2/1/2032

Possession

Arranged

Asking Rent

\$1,400,000 per annum gross

Highlights

- Strong curb appeal on Broadway
- Heavy 7-day pedestrian activity catering to the heavy office population, tourists and residents
- Steps to train stations - Wall Street, Rector Street and Broad Street
- Potential to be part of the continuously evolving downtown scene

Neighbors

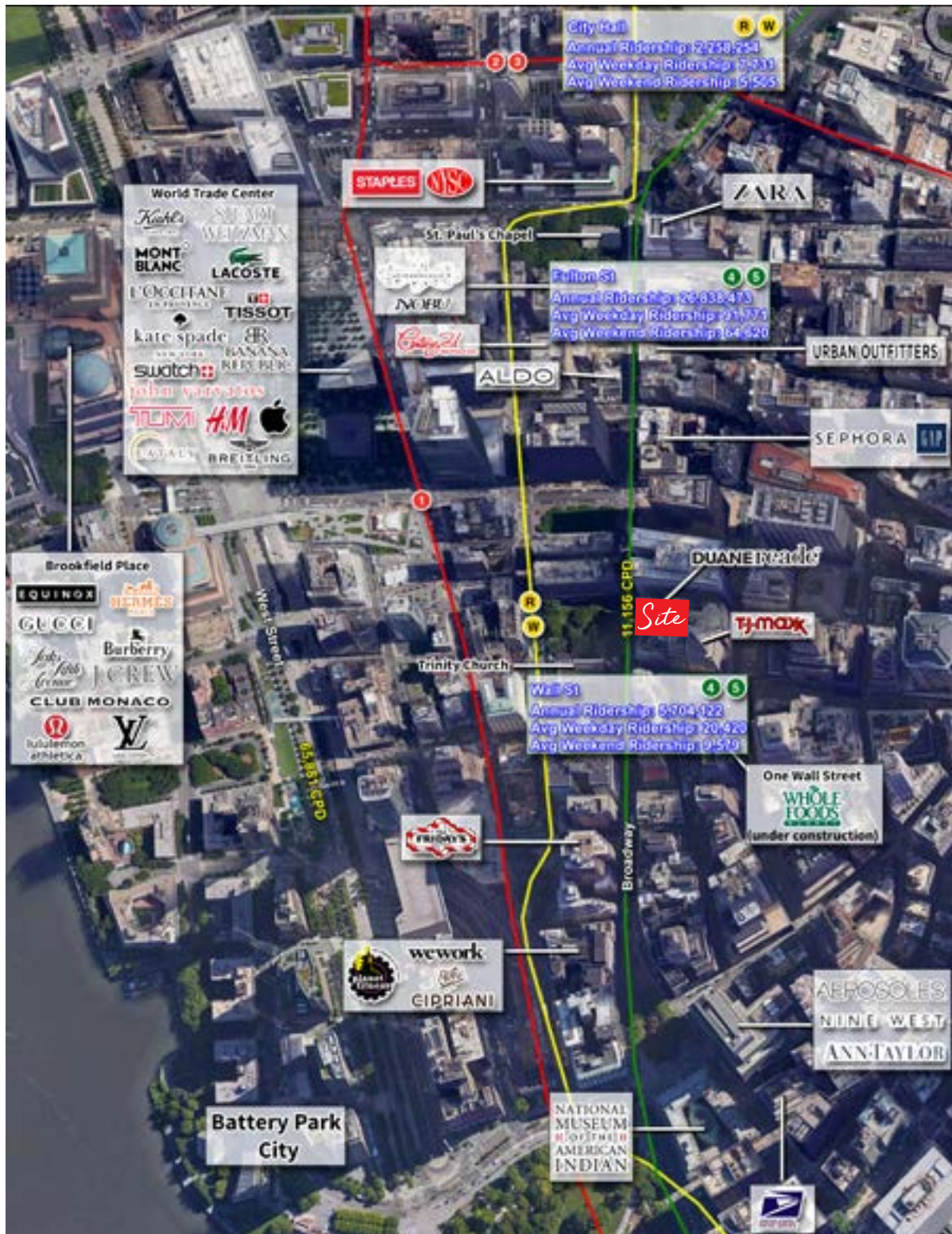


Michael Riley
+1 212 812 5901
Michael.Riley@am.jll.com

Patrick A. Smith
+1 212 812 5888
Patricka.Smith@am.jll.com

100 Broadway

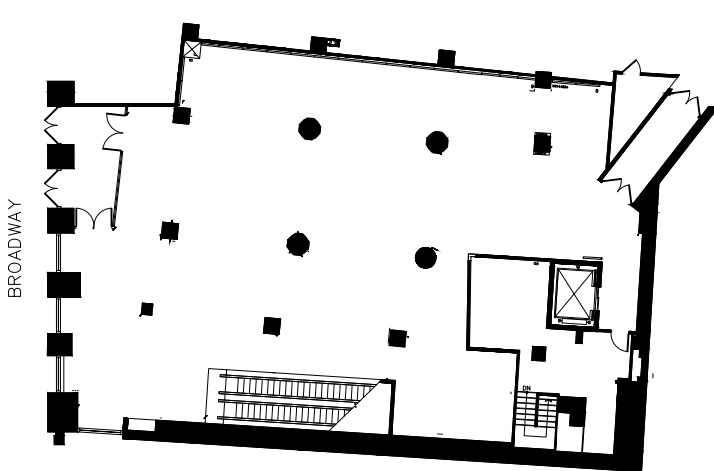
Aerial Map



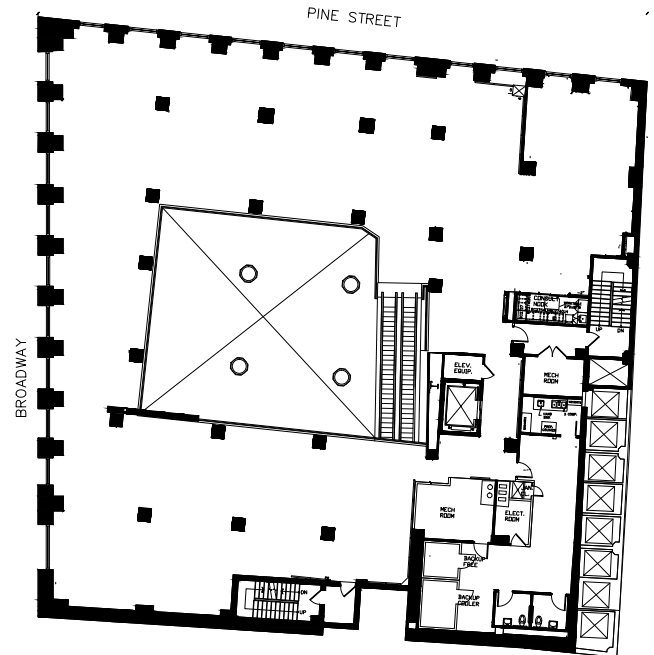
100 Broadway

Floor Plans

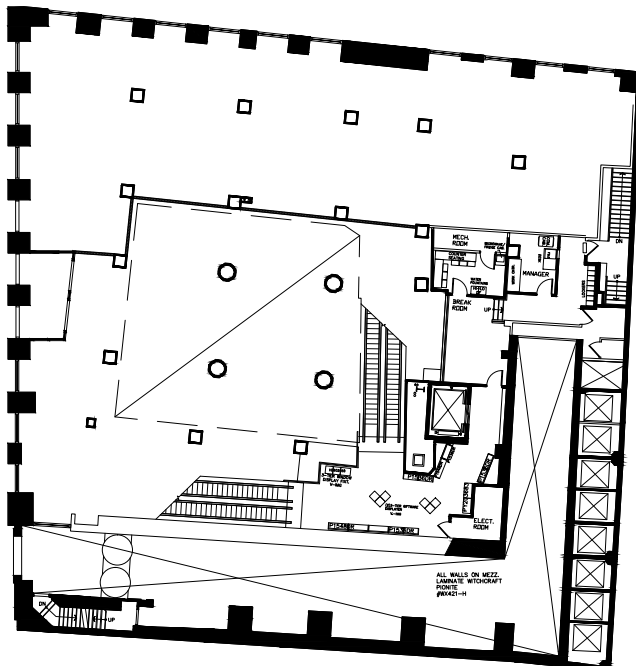
Ground Floor 5,753 s



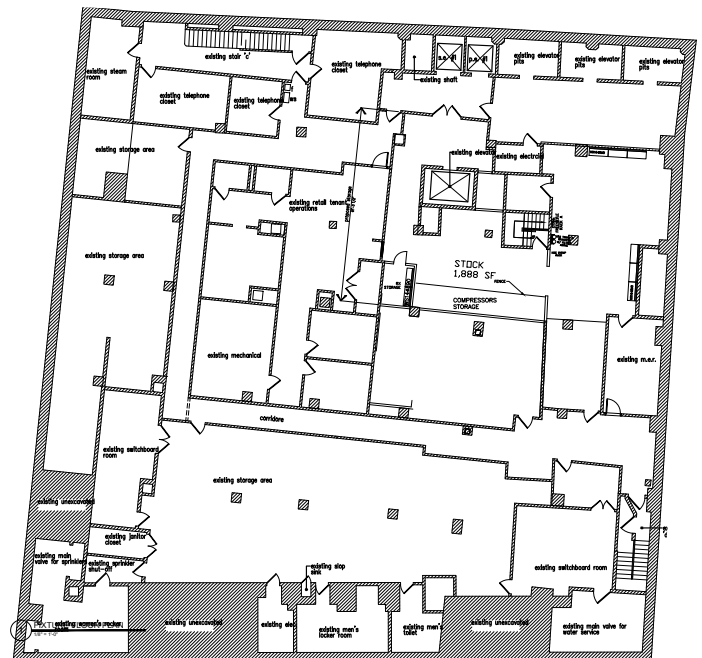
Second Floor 10,547 sf



Mezzanine 1,920 sf

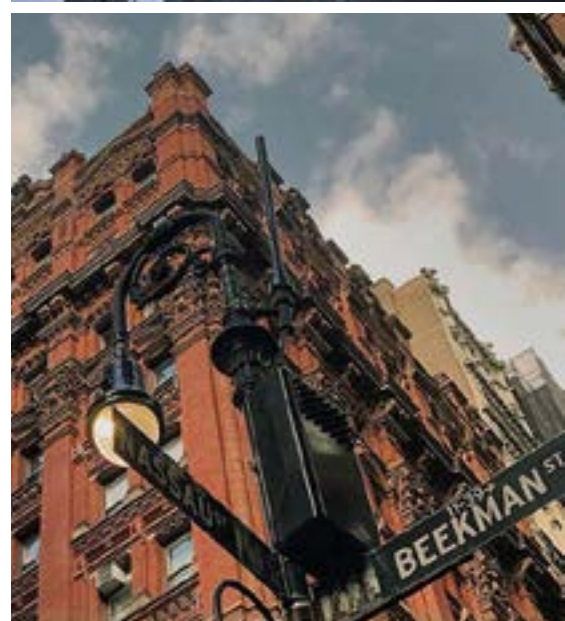


Lower Level 1,880 sf



100 Broadway

Area Photos



Jones Lang LaSalle Brokerage, Inc. | 330 Madison Avenue New York, NY 10017
DISCLAIMER

Although information has been obtained from sources deemed reliable, neither Owner nor JLL makes any guarantees, warranties or representations, express or implied, as to the completeness or accuracy as to the information contained herein. Any projections, opinions, assumptions or estimates used are for example only. There may be differences between projected and actual results, and those differences may be material. The Property may be withdrawn without notice. Neither Owner nor JLL accepts any liability for any loss or damage suffered by any party resulting from reliance on this information. If the recipient of this information has signed a confidentiality agreement regarding this matter, this information is subject to the terms of that agreement. ©2020 Jones Lang LaSalle IP, Inc. All rights reserved.